



SOMSO
MODELLE
SINCE 1876

Nature
is our
Model

EYE

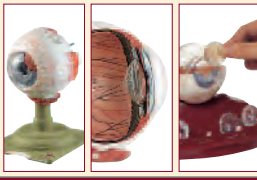
EAR

TEETH AND JAW

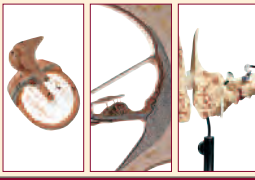
NOSE, TONGUE AND LARYNX

CONTENTS

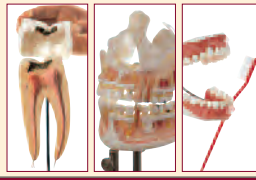
ANATOMY



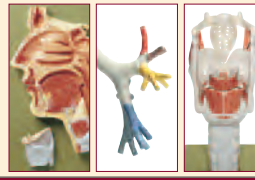
EYE
PAGE 45





EAR
PAGE 51



**TEETH
AND JAW**
PAGE 55




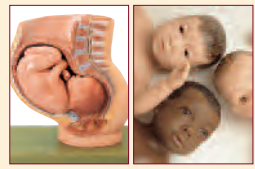
**NOSE, TONGUE
AND LARYNX**
PAGE 61

MUSCULAR FIGURES AND TORSOS
DIGESTIVE ORGANS
ANATOMY OF SKIN AND HAIR
URINARY ORGANS

www.somso.de


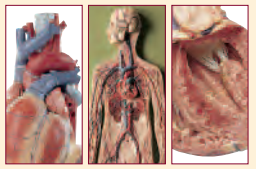
special catalogue no.
A 75/SV-I

GENITAL ORGANS
EMBRYONIC DEVELOPMENT
ZIEGLER SERIES
BIRTH
BABY CARE

www.somso.de



special catalogue no.
A 75/SV-V

CIRCULATORY ORGANS

www.somso.de



special catalogue no.
A 75/SV-IV

HEAD
NERVOUS SYSTEM

www.somso.de



special catalogue no.
A 75/SV-II

FUNGI MODELS
FRUIT MODELS

www.somso.de



special catalogue no.
A 75/SV-VIII

FOSSIL HUMAN MODELS

www.somso.de

special catalogue no.
A 75/SV-VI

REALISTIC LIFE-SIZE ANIMAL MODELS

Nature is our Model

www.somso.de

special catalogue no.
A 75/SV-VII

*You can obtain
our further single
catalogues as well
as our complete
catalogue, the
anatomy catalogue
and the zoology and
botany catalogue
on inquiry.*

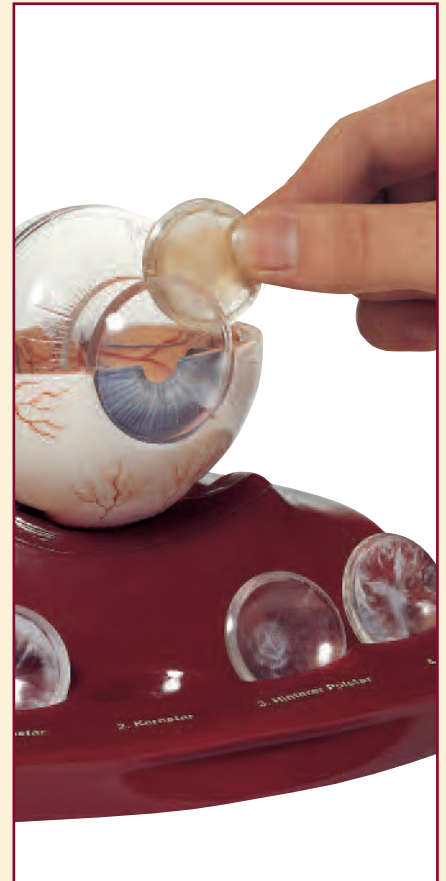
SOMSO - A FULL FIVE-YEAR GUARANTEE

SOMSO, recognised worldwide as a manufacturer in this field, offers a full five-year warranty - on nearly all SOMSO models - that covers both durability and workmanship, subject to correct use.





SOMSO
MODELLE
SINCE 1876



*SOMSO eye models –
from the eye to the cataract model*

THE EYE

ANATOMY 4 - EYE

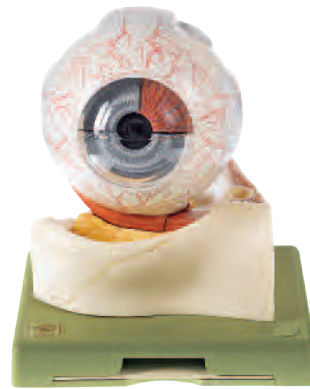
SOMSO eye models:
size = horizontal diameter of the eye



CS 1 - CS 4 - CS 7 - CS 10 - CS 11:
enlarged approximately 5 times,
diameter 12.5 cm.

CS 5:
enlarged approximately 4 times,
diameter 9.5 cm.

CS 2 - CS 2/2:
enlarged approximately 3 times,
diameter 8 cm.



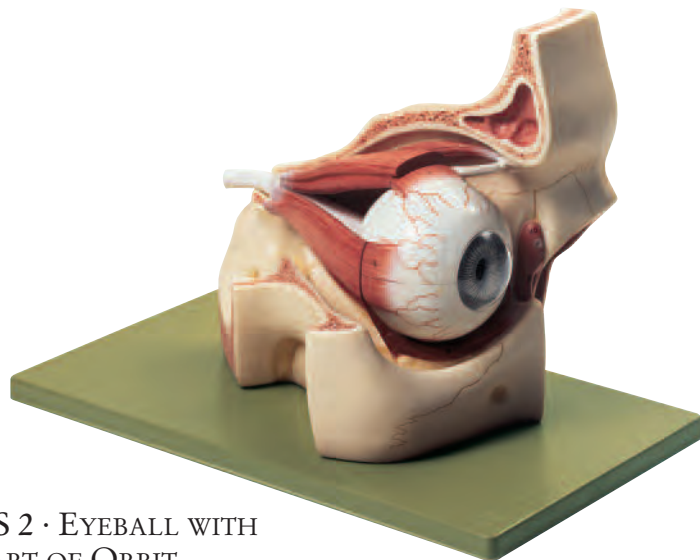
CS 1 · EYEBALL

Enlarged approx. 5 times, in SOMSO-Plast®. Resting in the lower bones of the orbit and sectioned horizontally. Separates into 7 parts: sclerotic membrane (2), choroid membrane (2), retina with vitreous humour, lens, bone of the orbit. On a green base. Height: 21 cm., width: 18 cm., depth: 18 cm., weight: 1.2 kg.



CS 16 · EYEBALL

Enlarged approx. 5 times, in SOMSO-Plast®. As CS 1, but with lacrimal organs and eyelids. Separates into 8 parts. On a green base. Height: 22 cm., width: 20 cm., depth: 18 cm., weight: 1.5 kg.

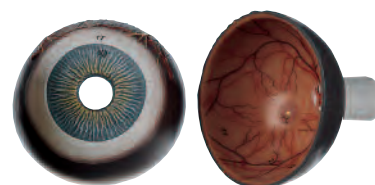


CS 2 · EYEBALL WITH PART OF ORBIT

Enlarged approx. 3 times, in SOMSO-Plast®. All six muscles of the eye are represented. The optic nerve is shown up to where it enters the base of the skull, the eyeball is sectioned horizontally. Separates into 8 parts: superior rectus and exterior straight muscle, upper half of the sclerotic membrane, choroid membrane and retina (2), vitreous humour, lens, orbit with green base. Height: 21 cm., width: 20 cm., depth: 32 cm., weight: 1.3 kg.

CS 2/2 · EYEBALL WITH PART OF ORBIT

Enlarged approx. 3 times, in SOMSO-Plast®. As CS 2, but with lacrimal organs and eyelids. Separates into 9 parts. On a green base. Height: 21 cm., width: 20 cm., depth: 32 cm., weight: 1.4 kg.



CS 4 · EYEBALL

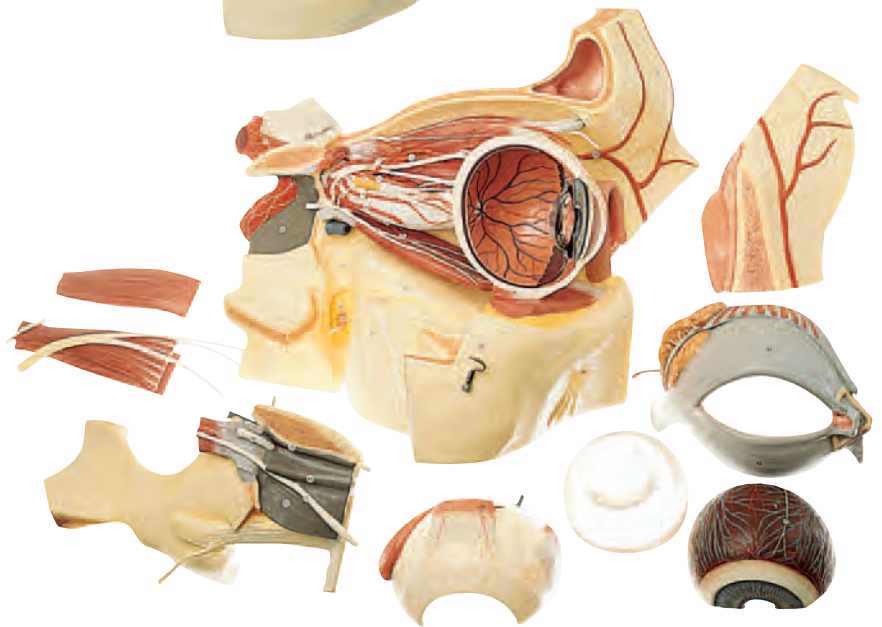
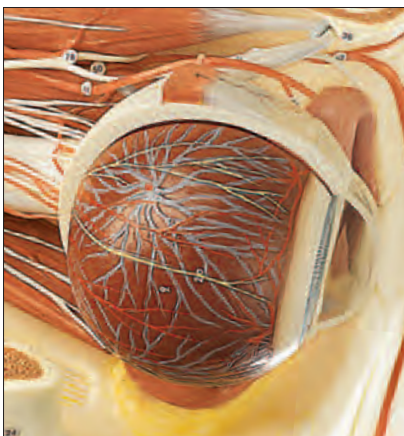
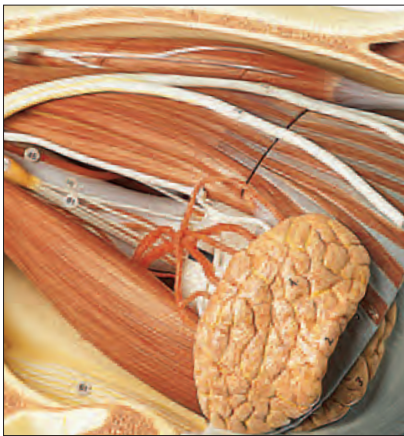
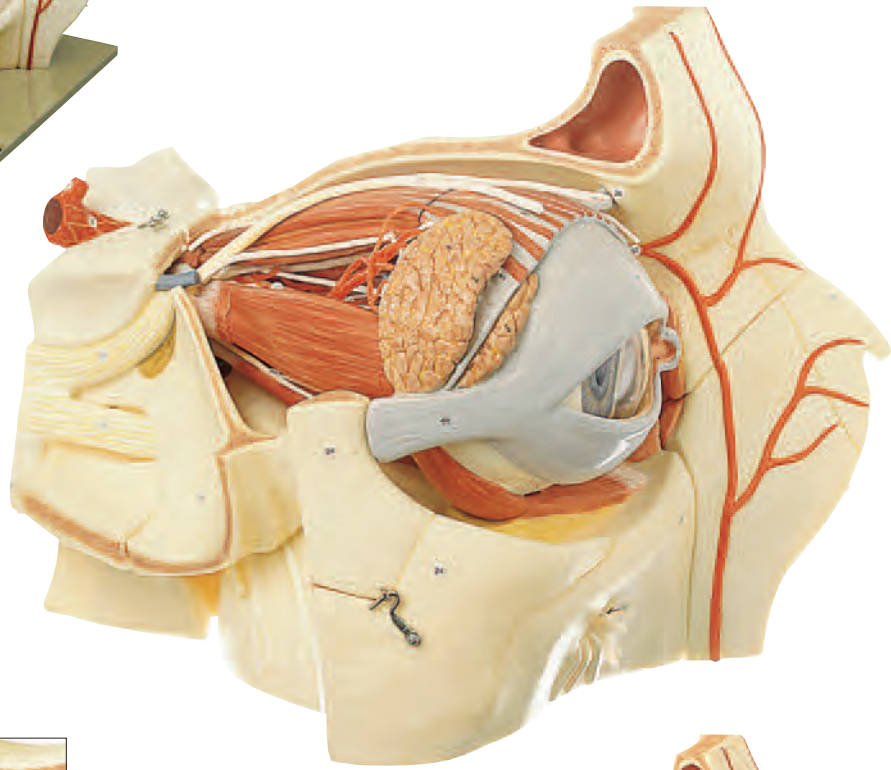
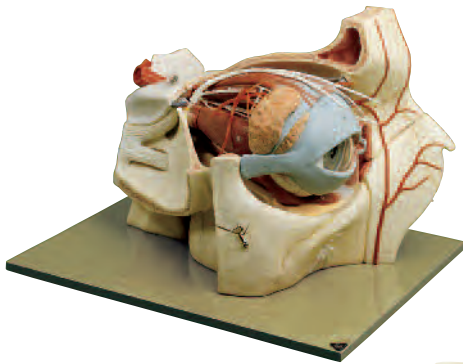
Enlarged approx. 5 times, in SOMSO-Plast®. Sectioned horizontally. Separates into 6 parts: upper half of the sclerotic membrane, choroid membrane (2), Retina with vitreous humour, lens, lower half of the sclerotic membrane. On a green stand. Height: 20 cm., width: 14 cm., depth: 14 cm., weight: 600 g.



CS 5 · EYEBALL

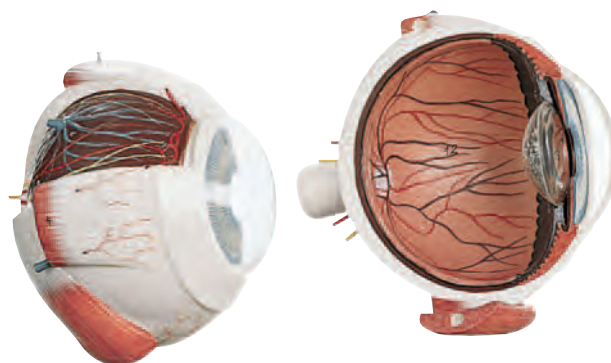
Enlarged approx. 4 times, in SOMSO-Plast®. Separates into 6 parts: sclerotic membrane (2), choroid membrane (2), vitreous humour, lens. On a green base. Height: 18 cm., width: 12 cm., depth: 12 cm., weight: 400 g.

ANATOMY 4 - EYE



CS 8/1 · TOPOGRAPHY OF THE ORBIT

Enlarged approx. 5 times, in SOMSO-Plast®. The orbital process of the frontal bone and the small wing of the sphenoid bone have been removed in order to allow view of the bony orbit. The six muscles of the eye are modelled very clearly and the superior and lateral straight muscles of the eyeball can be removed. Separates into 9 parts: Median section of the eyeball (the lens is fixed in the left half), vitreous humour, the right half of sclerotic membrane and choroid membrane with retina can be removed. All important nerves and blood-vessels are represented. Lacrimal organs with eyelids. On a green base. Height: 32 cm., width: 45 cm., depth: 37 cm., weight: 5.5 kg.



CS 11 · EYEBALL

Enlarged approx. 5 times, in SOMSO-Plast®. As CS 10, but the eyeball is mounted on the green base. Separates into 2 parts. Height: 21 cm., width: 13 cm., depth: 15 cm., weight: 600 g.



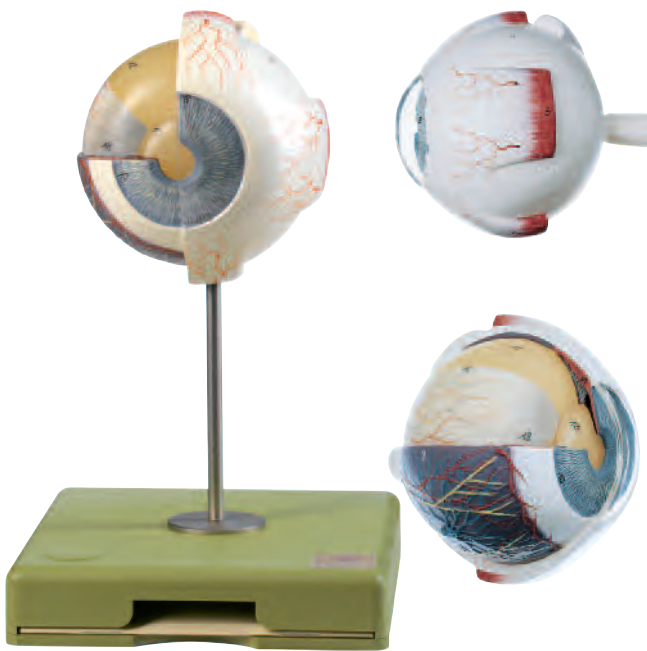
CS 10 · EYEBALL

Enlarged approx. 5 times, in SOMSO-Plast®. Resting in the bone of the base of the orbit. Median section. In the left half, the lens and vitreous humour are fixed. The right half shows the sclerotic membrane partially opened from the outside in order to expose the retina. The interior side shows the ciliary body and the background of the eye. A section of the retina shows the structural scheme of the choroid membrane with retina. Separates into 3 parts. On a green base, with explanation. Height: 20 cm., width: 32 cm., depth: 19 cm., weight: 1.3 kg.



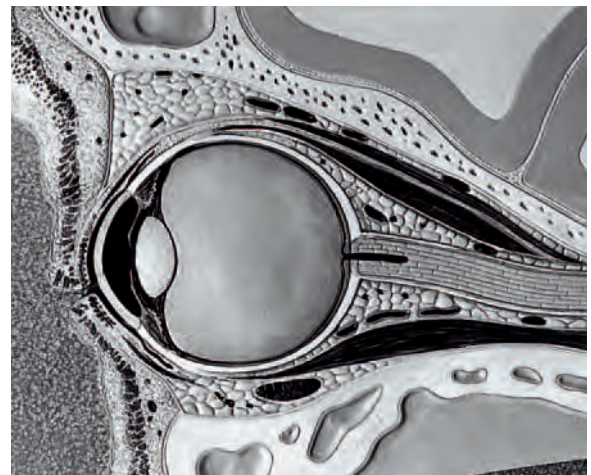
CS 7 · EYEBALL

Enlarged approx. 5 times, in SOMSO-Plast®. Resting in the lower bones of the orbit. Separates into 5 parts: Median section of the eyeball (the lens is fixed in the left half), vitreous humour, the right half separates into sclerotic membrane and choroid membrane - part with retina showing a microscopic schematic reproduction of the retina. On a green base, with explanation. Height: 20 cm., width: 32 cm., depth: 19 cm., weight: 1.2 kg.



CS 13 ·
EYEBALL

Enlarged approx. 4 times, in SOMSO-Plast®. The anatomy of the eyeball in different sectional levels is clearly visible. The model is not removable. On a stand with green base. Height: 21 cm., width: 12 cm., depth: 12 cm., weight: 200 g.



C 14 ·
MEDIAN SECTION OF THE ORBIT

Enlarged approx. 4 times. Sectional model. In one piece. Mounted on a green base under a transparent cover. Height: 25.5 cm., width: 32 cm., depth: 4.5 cm., weight: 900 g.

In preparation: Model in SOMSO-Plast®, CS 14



CS 21/1 ·
RIGHT HALF OF THE HUMAN EYE ON A BASE

Enlarged approx. 6 times. Eyeball diameter 15.8 cm., in SOMSO-Plast®. In one piece. Height: 18 cm., width: 21 cm., depth: 18.5 cm., weight: 900 g.

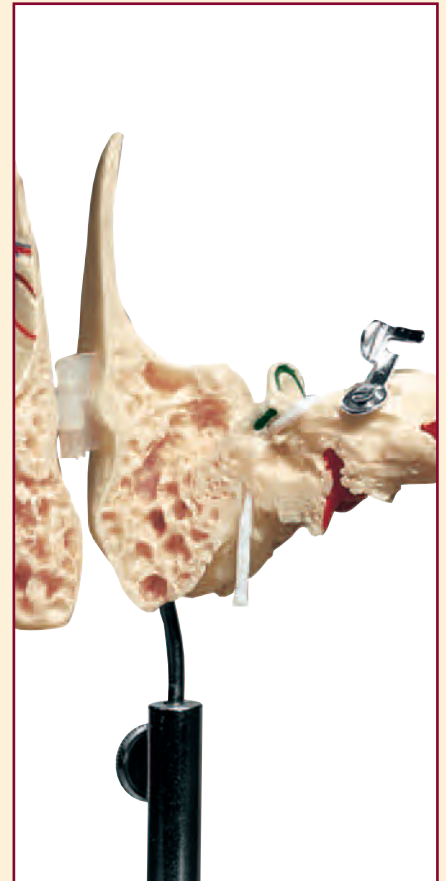
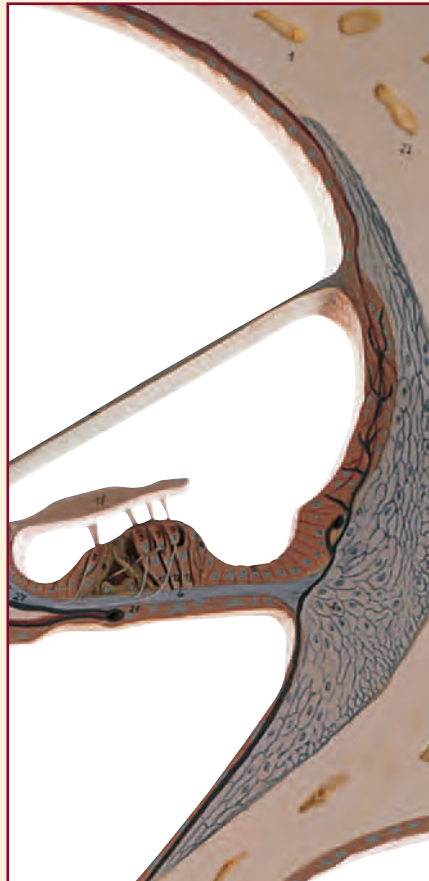
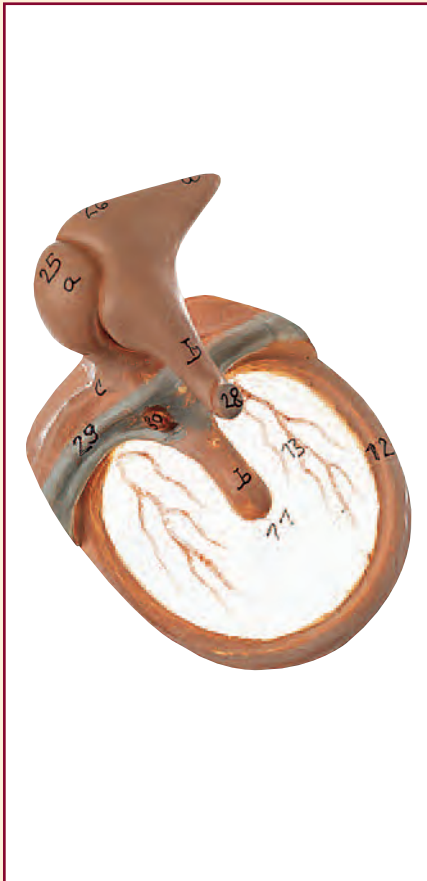


CS 22 ·
CATARACT EYE MODEL

Enlarged approx. 3 times, in SOMSO-Plast®. Shown are four forms of cataract: 1. cortical cataract (cataracta corticalis), 2. nuclear cataract (cataracta nuclearis), 3. posterior polar cataract (cataracta polaris posterior), 4. coronary cataract (cataracta coronaria). Height: 13 cm., length: 16 cm., depth: 15 cm., weight: 600 g.



SOMSO
MODELLE
SINCE 1876

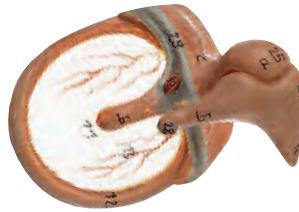
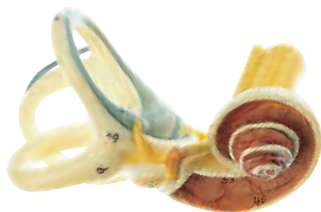
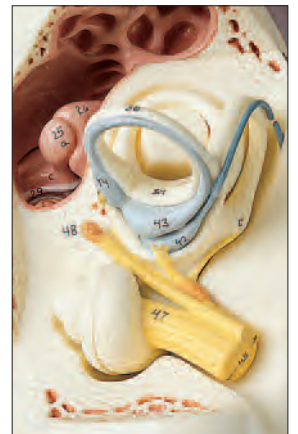
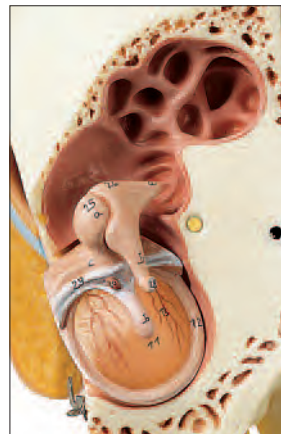


*That marvel, the human organ of hearing
and balance, can be understood thanks to
a SOMSO model*

*From the natural size temporal bone and auditory ossicles through to an enlarged section
through the central spiral of the cochlea.*

EAR

ANATOMY 5 - EAR



DS 1 · EAR WITH PINNA

Enlarged approx. 4 times, in SOMSO-Plast®. Separates into 8 parts: pinna, petros portion of temporal bone (3), tympanic membrane, labyrinth (2), Eustachian tube. On a stand with green base. Height: 41 cm., width: 44 cm., depth: 26 cm., weight: 3.7 kg.



QS 8/51 · ARTIFICIAL TEMPORAL BONE

Natural cast, in SOMSO-Plast®. In one piece. On a stand with green base. Height: 17 cm., width: 12 cm., depth: 12 cm., weight: 150 g.



QS 8/53 · ARTIFICIAL TEMPORAL BONE

Natural cast, in SOMSO-Plast®. The opened tympanic cavity shows the tympanic membrane, the three auditory ossicles, the cochlea and the semicircular canals. Separates into 2 parts. On a stand with green base. Height: 17 cm., width: 12 cm., depth: 12 cm., weight: 150 g.

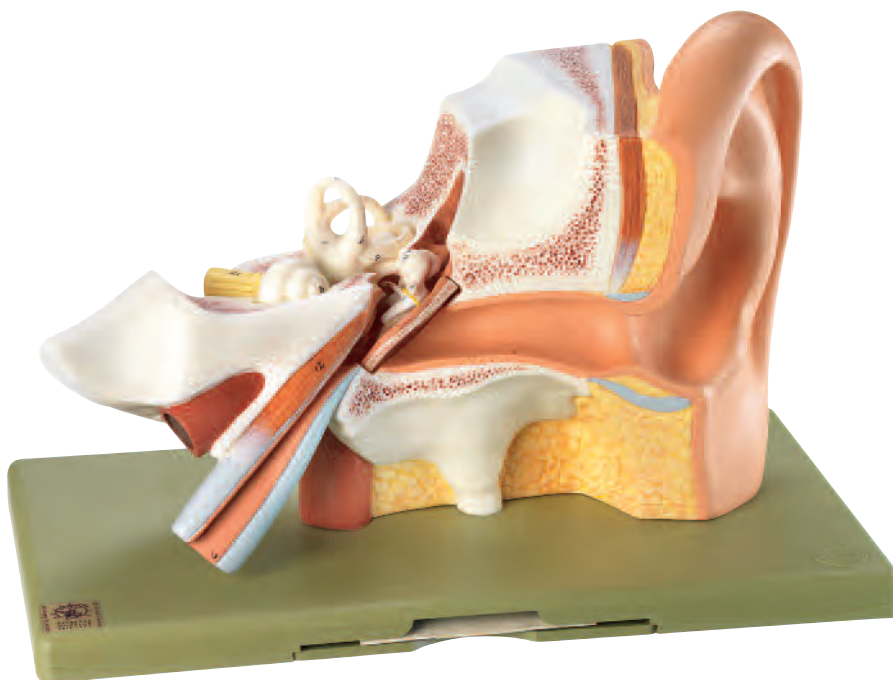


QS 8/54 · ARTIFICIAL TEMPORAL BONE

Natural cast, in SOMSO-Plast®. The opened tympanic cavity shows the tympanic membrane, the three auditory ossicles, the cochlea and the semicircular canals. The labyrinth can be removed. Separates into 4 parts. On a stand with green base. Height: 17 cm., width: 12 cm., depth: 12 cm., weight: 150 g.

DS 3 · EAR

Enlarged approx. 3 times, in SOMSO-Plast®. Separates into 3 parts: tympanic membrane with malleus, incus and labyrinth with stapes can be removed. Mounted on a green base, with explanation. Height: 21 cm., width: 32 cm., depth: 19 cm., weight: 1.2 kg.



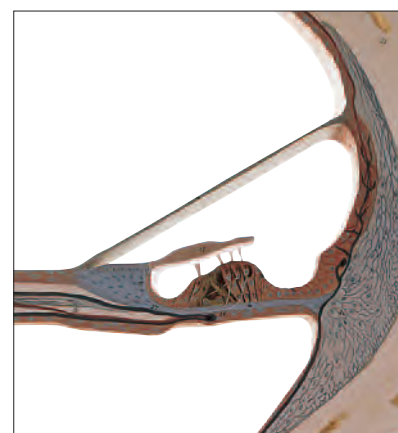
DS 5 · EAR

Enlarged approx. 3 times, in SOMSO-Plast®. Separates into 6 parts: the petros portion of the temporal bone and section of the auditory canal can be removed, the labyrinth can be taken out and opened. The tympanic membrane with malleus and incus are also removable. On a green base, with explanation. Height: 21 cm., width: 32 cm., depth: 19 cm., weight: 1.5 kg.



DS 10 · SECTION THROUGH THE CENTRAL SPIRAL OF THE COCHLEA

Enlarged many times, in SOMSO-Plast®. The scala of the vestibule, the scala of the tympanum, the cochlea duct with tectorial membrane and organ of Corti are shown. In one piece. On a green base. Height: 51 cm., width: 48 cm., depth: 5 cm., weight: 3.8 kg.





DS 14 · LABYRINTH

Enlarged approx. 18 times, in SOMSO-Plast®. The superior semi-circular canal and vestibule open showing the saccule and utricle. Cochlea separates longitudinally. The network of nerves of the organ of balance is represented. Separates into 2 parts. On a stand with green base. Height: 33 cm., width: 24 cm., depth: 18 cm., weight: 800 g.



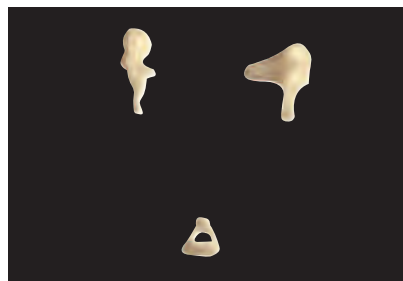
DS 17 · LABYRINTH WITH OSSICLES AND TYMPANIC MEMBRANE

Enlarged approx. 4 times, in SOMSO-Plast®. The model clearly shows the organs of the middle ear space and the inner ear. The membranous and bony labyrinths are shown and the cochlea can be opened. Separates into 3 parts. On a stand with green base. Height: 20 cm., width: 18 cm., depth: 18 cm., weight: 300 g.



DS 18 · OSSICLES

After Prof. Dr. Neubert, enlarged approx. 19 times, in SOMSO-Plast®. Consisting of the malleus, incus and stapes. Separates into 3 parts. On a stand with green base. Height: 20 cm., width: 13 cm., depth: 16 cm., weight: 300 g.



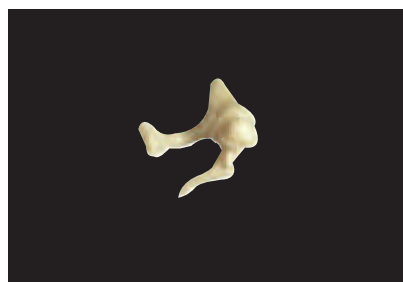
QS 69 · THE THREE AUDITORY OSSICLES

model text see page 122



QS 70 · ARTIFICIAL BONY LABYRINTH

model text see page 122



QS 69/1 · THE THREE AUDITORY OSSICLES

model text see page 122



QS 70/1 · THE THREE AUDITORY OSSICLES WITH BONY LABYRINTH

model text see page 122



SOMSO
MODELLE
SINCE 1876



*Teeth and Jaw Models -
Indispensable aids to dental care instruction*

*Only the original model ES 22, used to demonstrate the correct way to brush teeth,
bears the quality seal »Developed in co-operation with the Bundeszentrale für Gesundheitliche
Aufklärung« in Cologne*

TEETH AND JAW

ANATOMY 6 - TEETH AND JAW



ES 1 · SET OF TEETH OF AN ADULT

Natural size, consisting of 32 teeth in SOMSO-Plast® in a transparent box which can be opened. Height: 4 cm., width: 13 cm., depth: 9 cm., weight: 100 g.



ES 3 · LOWER JAW OF A 12-YEAR-OLD

Second dentition, (shown in the left half of the lower jaw) enlarged approx. 3 times, in SOMSO-Plast®. Dental caries on the first and second molar. In one piece. On a green base. Height: 18 cm., width: 31.5 cm., depth: 8 cm., weight: 800 g.



ES 4 · LOWER JAW OF AN 18-YEAR-OLD

Enlarged approx. 3 times, in SOMSO-Plast®. The model shows the left half of the lower jaw. The part of the jaw covering the roots of the teeth is removable. The canine and first molar can be removed. Caries shown on the second molar. Separates into 6 parts. On a stand with green base. Height: 34 cm., width: 34 cm., depth: 18 cm., weight: 1.6 kg.



ES 4/1 · LOWER JAW OF AN 18-YEAR-OLD

Separates into 6 parts as ES 4, but the removable canine tooth shows periodontitis and dental caries in advanced stages. The first molar shows inflammation of the dental pulp. On a stand with green base. Height: 34 cm., width: 34 cm., depth: 18 cm., weight: 1.6 kg.

ES 8 · MOLAR TOOTH WITH CARIES

Enlarged approx. 8 times, in SOMSO-Plast®. Separates into 3 parts showing dental caries in initial and advanced stages. On a stand with green base. Height: 24 cm., width: 12 cm., depth: 12 cm., weight: 400 g.



ES 6 · CASE OF TEETH "KEEP YOUR TEETH HEALTHY"

Natural size and enlarged teeth, in SOMSO-Plast®. Both healthy and decayed teeth are shown in series of 12 models. In one piece. Mounted on a green board under a removable transparent cover. Height: 26 cm., width: 32 cm., depth: 4 cm., weight: 800 g.



ES 7 · CASE OF TEETH "ODONTOPATHIES"

Natural size teeth, in SOMSO-Plast®. The main dental diseases are shown in a series of 25 models. In one piece. Mounted on a green board under a removable transparent cover. Height: 26 cm., width: 32 cm., depth: 4 cm., weight: 800 g.





ES 11/5 SEPARATED

ES 11/5 ES 11/4

ES 11/3

ES 11/2

ES 11/1

ES 11 · FIVE MODELS OF TEETH

Enlarged approx. 8 times, each mounted on a stand with green base, in SOMSO-Plast®. As ES 11/1 to ES 11/5. Weight: 2.2 kg

ES 11/1 · LOWER INCISOR

Enlarged approx. 8 times, in SOMSO-Plast®. Separates into 2 parts. Half of the crown is removable. On a stand with green base. Height: 22 cm., width: 12 cm., depth: 12 cm., weight: 300 g.

ES 11/2 · LOWER CANINE

Enlarged approx. 8 times, in SOMSO-Plast®. Separates into 2 halves longitudinally. On a stand with green base. Height: 27 cm., width: 12 cm., depth: 13 cm., weight: 500 g.

ES 11/3 · LOWER MOLAR WITH ONE ROOT

Enlarged approx. 8 times, in SOMSO-Plast®. In one piece. On a stand with green base. Height: 22 cm., width: 12 cm., depth: 13 cm., weight: 300 g.

ES 11/4 · LOWER MOLAR WITH TWO ROOTS

Enlarged approx. 8 times, in SOMSO-Plast®. Separates into 3 parts showing dental caries in initial and advanced stages. On a stand with green base. Height: 24 cm., width: 12 cm., depth: 12 cm., weight: 400 g.

ES 11/5 · FIRST UPPER MOLAR WITH THREE ROOTS

Enlarged approx. 8 times, in SOMSO-Plast®. Separates into 3 parts. On a stand with green base. Height: 23 cm., width: 12 cm., depth: 13 cm., weight: 700 g.



ES 22 · MODEL OF A SET OF TEETH

Enlarged approx. 3 times, with large toothbrush to demonstrate how to brush one's teeth, in SOMSO-Plast®. Free-standing. From an original at the Bundeszentrale fuer gesundheitliche Aufklaerung, Cologne. Height: 14 cm., width: 19 cm., depth: 25 cm., weight: 1.3 kg.



ES 13 · HALF OF THE UPPER AND LOWER JAW

Natural size, in SOMSO-Plast®. Showing the nerves and vessels and the main dental diseases. In one piece. Under removable transparent cover, on a green board. Height: 19 cm., width: 32 cm., depth: 7 cm., weight: 600 g.



ES 13/1 · UPPER AND LOWER JAW

Natural size, in SOMSO-Plast®. Separates into 2 parts showing the nerves and vessels and the main diseases. On a removable stand with green base. Height: 19 cm., width: 12 cm., depth: 12 cm., weight: 200 g.



ES 14 · DEVELOPMENT OF A SET OF TEETH

Natural size, in SOMSO-Plast®. Shows half of the upper and lower jaw of a new-born child, a 5-year-old child, a 9-year-old child and an adult. In one piece. On a stand with green base. Height: 24 cm., width: 33 cm., depth: 11 cm., weight: 700 g.



ES 14/1 · DEVELOPMENT OF A SET OF TEETH

Fully exposed. Cast from natural specimen, in SOMSO-Plast®. Shows the upper and lower jaw in the following order: set of teeth of a new-born child, a 5-year-old child, a 9-year-old child, and an adult. Upper and lower jaw can each be removed. Separates into 8 parts. On a stand with green base. Height: 20 cm., width: 48 cm., depth: 15 cm., weight: 1 kg.
The development of teeth ES 14/1 is also available individually mounted to order no. ES 14/1-1 - ES 14/1-4.

ANATOMY 6 - TEETH AND JAW



Height
39 cm



ES 12 · RIGHT LOWER FIRST MOLAR

Dens molaris, enlarged approx. 16 times, in SOMSO-Plast®. Separates into 6 parts. On a stand with green base. Height: 39 cm., width: 39 cm., depth: 26 cm., weight: 3.3 kg.

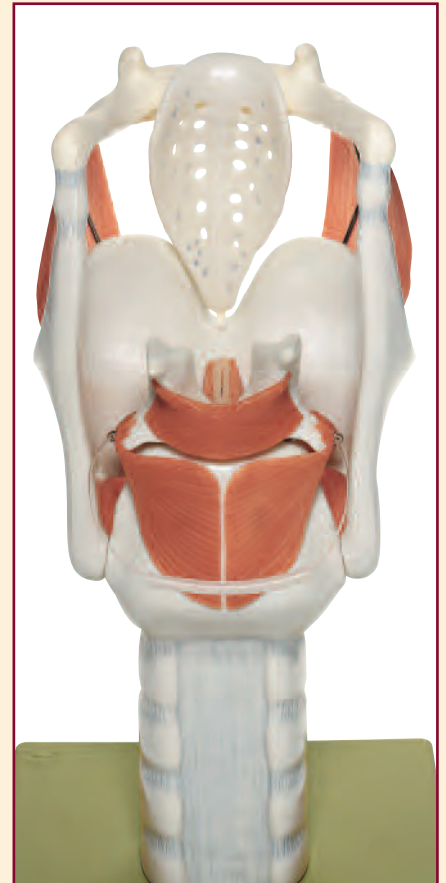


ES 21 · RIGHT LOWER JAW WITH MUSCLES

Enlarged approx. 3 times, in SOMSO-Plast®. The temporo-maxillary joint is shown. Separates into 14 parts. On a stand with green base. Height: 47 cm., width: 45 cm., depth: 26 cm., weight: 3 kg.

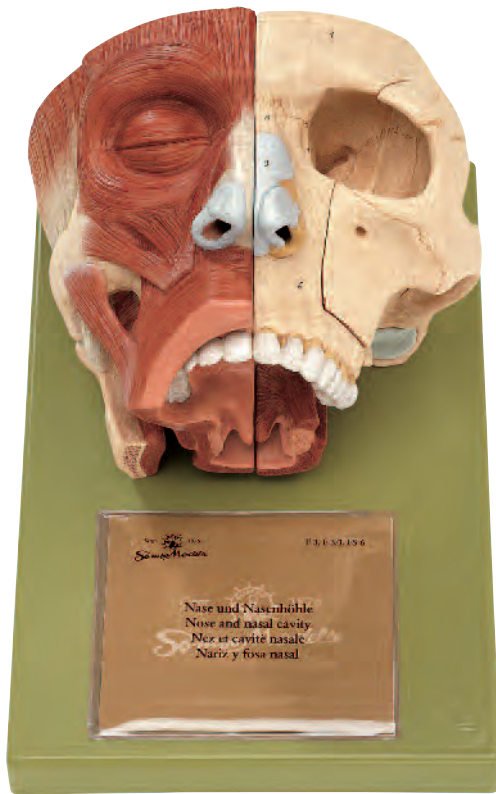


SOMSO
MODELLE
SINCE 1876



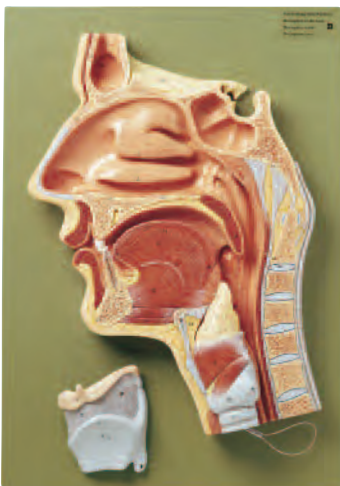
*SOMSO offers models of
the tongue, larynx and trachea suitable
for teaching purposes*

NOSE, TONGUE AND LARYNX



FS 3 · NOSE AND NASAL CAVITIES

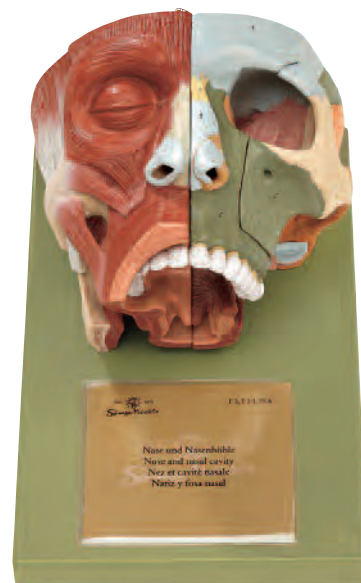
Enlarged approx. 2 times, in SOMSO-Plast®. Median section. The left half shows the bones of the base of the skull with removable upper and lower nasal conchae. Right half of the model shows the mimic muscles and the mucous membrane of the nose with removable nasal septum. Separates into 6 parts. On a green base. Height: 39 cm., width: 26 cm., depth: 27 cm., weight: 3 kg.



Ⓕ

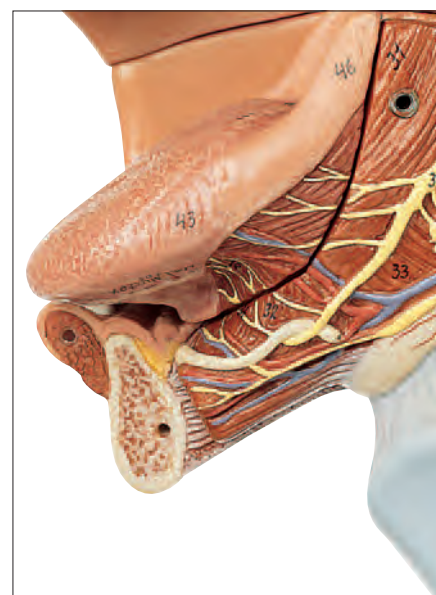
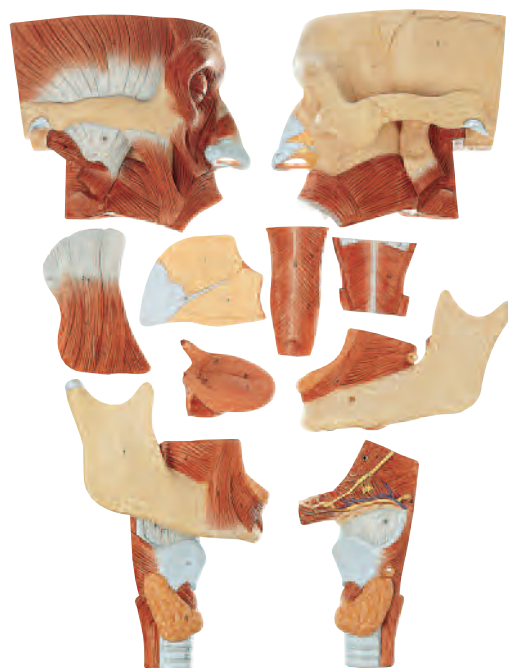
FS 4 · MEDIAN SECTION OF THE CAVITIES OF NOSE, MOUTH AND THROAT

Enlarged approx. 2 times, in SOMSO-Plast®. Larynx removable, epiglottis elastic and movable, the crossing of the windpipe and oesophagus can be easily demonstrated. Separates into 2 parts. On a green base. Height: 40 cm., width: 28 cm., depth: 9 cm., weight: 1.6 kg.



FS 3/1 · NOSE AND NASAL CAVITIES

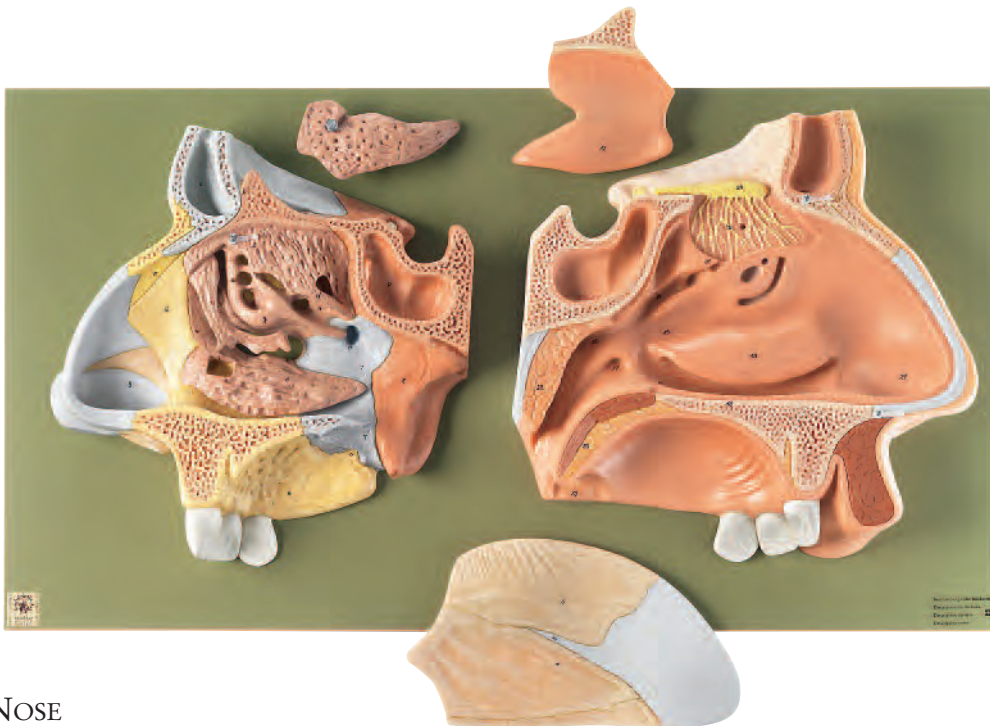
Enlarged approx. 2 times, in SOMSO-Plast®. Separates into 6 parts as FS 3, but the bones of the base of the skull are coloured. On a green base. Height: 39 cm., width: 26 cm., depth: 27 cm., weight: 3 kg.



FS 5 · CAVITIES OF NOSE, MOUTH AND THROAT WITH LARYNX

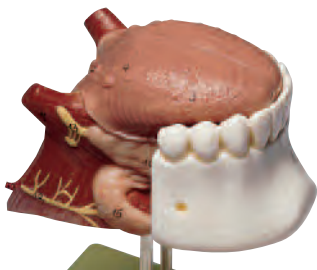
Enlarged approx. 2 times, in SOMSO-Plast®. Upper part: left side bones of the skull, right side mimic muscles, median section through the nasal cavity, upper cavity of the mouth and upper region of the throat. Lower part: lower jaw, removable tongue, larynx, pharyngeal wall, sagittal section through the larynx. Separates into 10 parts. On a removable green base. Height: 48 cm., width: 27 cm., depth: 38.5 cm., weight: 5.9 kg.

ANATOMY 7/8 - NOSE AND TONGUE



FS 6 · NOSE

Enlarged approx. 3 times, in SOMSO-Plast®. An instructive double model which clearly shows the complicated structure of bones and the nasal cavity covered by mucous membrane. Individual cartilages and bone are coloured. The nasal concha can be removed (entry to the ethmoidal labyrinth is visible). The right side shows the nasal septum (removable) and the mucous membrane of the nasal cavity with the three nasal passages and nasal conchae. The middle concha can be removed so that the olfactory nerve and olfactory lobe can be seen. Separates into 5 parts. On a green base. Height: 38 cm., width: 72 cm., depth: 8 cm., weight: 5.8 kg.



FS 8 · TONGUE

Natural size, in SOMSO-Plast®. Median section with one part of the lower jaw removable. Separates into 3 parts. On a stand with green base. Height: 14 cm., width: 12 cm., depth: 12 cm., weight: 300 g.



GS 3 · LARYNX

Natural size, in SOMSO-Plast®. Cartilaginous skeleton, ligamentous apparatus, muscles, relief of mucous membrane and thyroid gland are shown. Separates into 2 parts. On a green base. Height: 17 cm., width: 12 cm., depth: 12 cm., weight: 300 g.



GS 7 · LARYNX

Enlarged approx. 2 times, in SOMSO-Plast®. Median section (2 parts). Removable parts: the right thyroid cartilage, the cricothyroid muscle and the thyrohyoid muscle. Inner and outer muscles of the larynx, the relief of mucous membrane, network of arteries and nerves and the cartilaginous skeleton can be demonstrated. Separates into 5 parts. On a stand with green base. Height: 22 cm., width: 12 cm., depth: 12 cm., weight: 700 g.

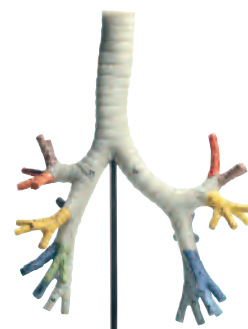


GS 4/1 · LARYNX WITH TRACHEA

Natural size, in SOMSO-Plast®. Left half of the larynx removable. Shows: cartilages, trachea with bronchial tree and the individual segment bronchi. Ligamentous apparatus, muscles and relief of mucous membrane of the larynx are shown. Thyroid gland represented. Separates into 2 parts. Height: 35 cm., width: 19 cm., depth: 8 cm., weight: 400 g.

GS 4/2 · LARYNX WITH TRACHEA

Natural size, in SOMSO-Plast®. As GS 4/1, but on a stand with green base. Separates into 2 parts. Height: 39 cm., width: 20 cm., depth: 18 cm., weight: 700 g.



GS 4/3 · BRONCHIAL TREE

Natural size, in SOMSO-Plast®. The colours of the segment bronchi are contrasted to correspond with the broncho-pulmonary segments. In one piece. On a stand with green base. Height: 29 cm., width: 18 cm., depth: 12 cm., weight: 350 g.



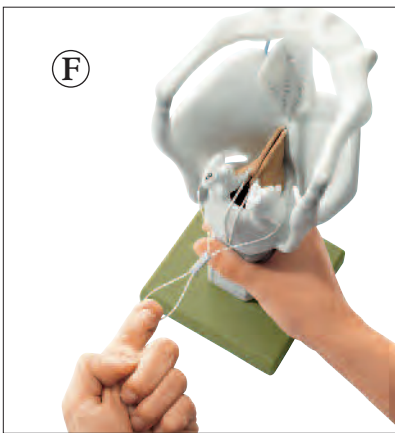
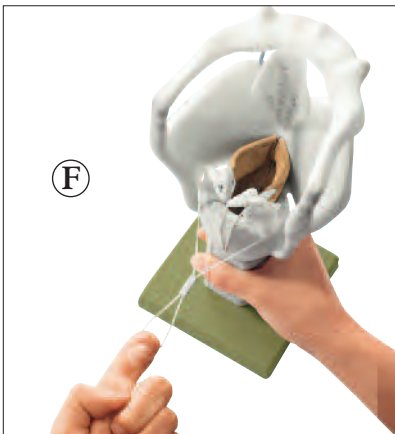
GS 4 · LARYNX WITH TONGUE

Natural size, in SOMSO-Plast®. Larynx: cartilages, ligaments, muscles, relief of mucous membrane and thyroid gland are shown. The front part of the lower jaw is removable. Tongue separates into 2 parts medially. Sublingual gland and submandibular gland are shown. Separates into 5 parts. On a green base. Height: 21 cm., width: 12 cm., depth: 15 cm., weight: 500 g.



GS 5 · LARYNX WITH TRACHEA

Enlarged approx. twice, in SOMSO-Plast®. Larynx and trachea can be separated at the level of the 6th tracheal cartilage. Larynx separates into 2 parts, medially. The right thyroid cartilage, the cricothyroid muscle and the thyrohyoid muscle are removable. The trachea shows its structure, bifurcation into the main bronchi and division into the lobular bronchi. Separates into 6 parts. On a stand with green base. Height: 59 cm., width: 39 cm., depth: 27 cm., weight: 2 kg.



GS 6 · CARTILAGES OF THE LARYNX

Functional model, enlarged approx. 2.5 times, in SOMSO-Plast®. Arytenoid cartilage, vocal folds and epiglottis can be moved. In one piece. On a green base. Height: 28 cm., width: 12 cm., depth: 14 cm., weight: 700 g.



GS 10 · FUNCTIONAL MODEL OF THE LARYNX

Enlarged approx. 3 times, in SOMSO-Plast®. The opening and closing of the true glottis, the variation of tension of the vocal fold and the passage of air can be very instructively demonstrated. In one piece. On a green base. Height: 32 cm., width: 18 cm., depth: 18 cm., weight: 1.5 kg.